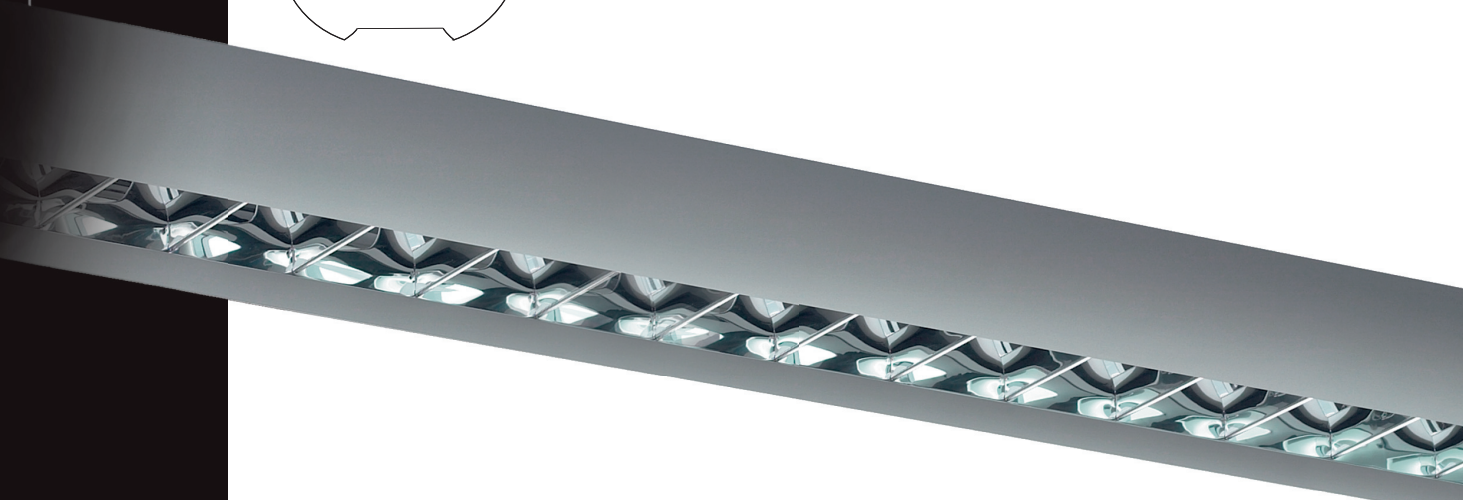


Sistema colgante
Pendant system

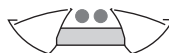
O m n i



SISTEMA COLGANTE LUZ DIRECTA / INDIRECTA BAJA LUMINANCIA

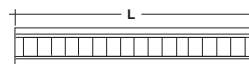
PENDANT LOW LUMINANCE DIRECT / INDIRECT LIGHTING SYSTEM

Módulos luz continua / Continuous lighting modules



T26

L
Longitud
Length



OMP 236 2 x 36 W

1300 mm

OMP 258 2 x 58 W

1600 mm

Con equipo electromagnético A. F.
With HPF electromagnetic gear

[Módulos en perfil de aluminio con testeros metálicos.

Óptica de baja luminancia con libre apertura de luz indirecta.

Opciones con equipos electrónicos EC y regulables ER .

Acabados en gris metalizado, blanco B y negro mate N]

[Aluminium profile modules with metal end caps.

Ultra low luminance optic with adjustable aperture for indirect light.

EC electronic gear and ER dimmer available as options.

Finished in metallic grey, white B and matt black N]

Detalle cobertura luminaria
Detail of cover luminaire



Tapa luz directa
Direct light cover



OPCIÓN LUZ DIRECTA

DIRECT LIGHT OPTION

Mediante accesorio TAPA (sustituye al sistema de cobertura superior de la luminaria) / The COVER accessory replaces the upper cover of the luminaire



OMT 1300 Tapa LUZ DIRECTA / DIRECT LIGHT cover 1300 mm

OMT 1600 Tapa LUZ DIRECTA / DIRECT LIGHT cover 1600 mm

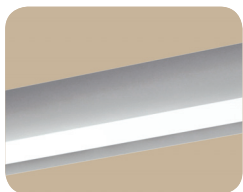
Sistema colgante
Pendant system

O m n i



ACCESORIOS

ACCESSORIES



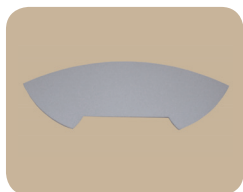
Perfil ciego / Profile section

OMC metro lineal a medida (mm)
linear meter to measure (mm)



Unión lineal / Linear joint

LB-UL



Tapa final / End cap

OM-TF

Suspensiones ver pág. 361
Suspensions see pag. 361

[**Accesorios generales para estructurar el sistema en líneas continuas mediante uniones, tapas finales y suspensiones. Acabados en gris metalizado, blanco B y negro mate N**]

[**A range of accessories for building track lighting systems, including joints, end caps and suspension kits. Finished in metallic grey, white B and matt black N**]