



**SISTEMA LINEAL COLGANTE O SUPERFICIE**


SURFACE-MOUNTED LINEAR SYSTEM


Módulos Luz Continua / Continuous lighting modules



T5

L  
Longitud  
Length

**QTS 254** 2 x 54 / 2 x 28 W  1180 mm

**QTS 249** 2 x 49 / 2 x 35 W  1480 mm

Con equipo electrónico multipotencia   
With electronic multipower  control gear

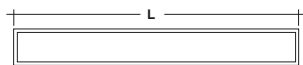
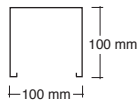
[ **Módulos en chapa de acero termoestablado. Difusor metacrilato opal. Opciones con equipos electrónicos regulables ER.**

**Acabados en gris metalizado, blanco B y negro mate N ]**

[ **Modular lighting in thermo-enamelled steel plate.**

**Opal methacrylate diffuser. ER dimmer available as an option.**

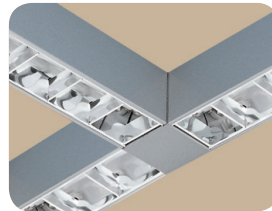
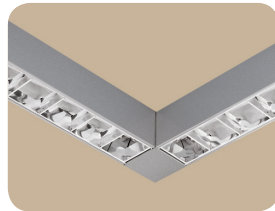
**Finished in metallic grey, white B and matt black N ]**





**ACCESORIOS**

ACCESSORIES

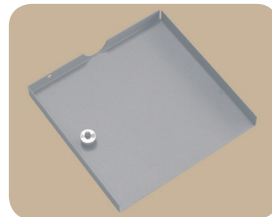


- QT-CD** Unión 90° / *L-joint* 100 x 100 mm
- QT-TE** Unión «T» / *T-joint* 100 x 100 mm
- QT-CZ** Unión «Cruz» / *X-joint* 100 x 100 mm
- QT-DI** Unión distanciador / *Spacer joint* 100 mm



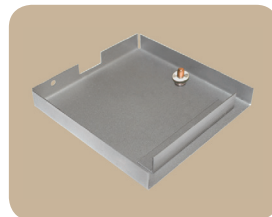
**Unión lineal interna / Internal linear joint**

**QT-UL**



**Tapa final / End cap**

- QT-TF** Tapa final para modelos individuales opales y reja parabólica individual y línea continua.  
*End cap for single opal and single or continuous line for parabolic luminaires.*



- QT-TFL** Tapa final para líneas continuas en modelos con difusor opal.  
*End cap for continuous line opal diffuser modules.*

**Suspensiones** ver pág. 361  
*Suspensions see pag. 361*

[ Accesorios generales para estructurar el sistema en mallas o líneas continuas, mediante uniones, tapas finales y suspensiones.

Acabados en gris metalizado, blanco B y negro mate N ]

[ A range of accessories for building track lighting systems or grids using joints, end caps and suspension kits.

Finished in metallic grey, white B and matt black N ]